



**ADDITIONAL NOTES:**

Contractor conducting utility locate and coordination Sta. 720+75 China Hat Rd and Sta. 753+50 Knott Rd. Communication between public / private utilities and Contractor ongoing. Deschutes County and City of Bend roadway permits MCPH2 pipe crossings posted. Knott Rd temporary closure 04-08-25 notifications issued. Woodside Rd temporary surfacing in place. Contractor has posted traffic control devices.

Contractor has completed foundation and wall construction Intake Structure Sta. 718+00. Foundation and wall dimensions per Dwg SD4, elevations as directed CO 01 - Intake Structure Location. Reinforcing steel per Dwg details SD1, SD2, SD3, and SD4. Reinforcing steel per approved Submittal 024.2 - Inlet Structure Rebar Dwgs R3. 60-IN ID HDPE entrance pipe spool per approved Submittal 16.1 - Krah HDPE Pipe Rev.2. Spool pipe at headwall as shown Dwgs SD2 and SD4, invert elevation 3890.63. Concrete placed; Hooker Creek Mix 50SL428A at Intake Structure foundation and walls. Concrete in accordance with spec 03300 and approved Submittal 32 - Concrete Mix Design Alt 1 (4500 PSI). This day, Contractor installed adhesive set bar ties and layout reinforcing steel for Intake Structure pipe collar (Ref. RFI02 - Wall Collar, and RFI 05 - Post Installed Rebar). Hole Size: 3/4-in, 5-in depth. Compressed air and bottle brush cleaned. Adhesive: Simpson AT-3G. Adhesive set reinforcing steel ties: #4 bar @ 12-IN OC, 5-inch min embed depth. Bonding agent applied at concrete mating surfaces EucoWeld 2.0. Cold weather concrete protection consisting of thermal blankets placed over walls until end 7-day cure period. (photos).

Contractor continued pipe trench excavation for installation 54-IN ID Profile Wall HDPE pipe and fabricated fittings. Trench excavation in progress approx Sta. 763+75 westbound. Excavation in approx 1.0 ft sandy silt and gravel with broken rock, underlain by hard rock. Trench excavation on line and grade per Drawing Sheet 12 of MCPH2, Seg2 Drawings. Work in accordance with spec 02300 - Earthwork. Cleanout assembly field located by Contractor at Sta. 765+70 (Photo).

Contractor continues placement and grading pipe bedding material for installation 54-IN Profile Wall HDPE. Pipe bedding material placement, final grading, and compaction in progress approximate Sta. 764+50 westbound. Pipe bedding material; 3/4"-0 Aggregate On-site Processed per approved Submittal 25 in accordance with spec 02300 - Earthwork. Contractor finish grading pipe bedding material using laser level take-off from constructions staking hubs. Densification of pipe bedding material provided with medium weight vibratory plate (Photos).

Contractor continues installation 54-IN ID profile wall HDPE pipe by Krah USA. Pipe materials conforming with spec 15068 and approved submittal 16.1 - Krah HDPE Pipe Rev.2. Electro-fusion of field pipe joints with Integrifuse Electrofusion Processor Serial No. 00653, 00657, 00665, and 00667. Contractor fielded (1) additional generator to support success fly electrofusion weld cycles. Field welded pipe joints subject to air pressure testing; 25 psig, 5 minutes, PASS criteria: no pressure loss. Air testing of completed field joints in accordance with pipe manufacturers written instructions. Electro-fusion data and air pressure test data recorded and posted to the project record. Installation of 54-IN ID RSC400 pipe in progress approximate Sta. 765+50 westbound.

CEG conducted QA pipe slope measurement interior to installed 54-IN profile wall HDPE pipe using 4-ft smart level at pipe flow line. Sta. 766+80 slope = -0.1% (easterly) as measured on pipe interior flow line. Sta. 766+00 slope = -0.1% (easterly) as measured on pipe interior flow line. QA pipe slope measurement in general accord with pipe profile Drawing Sheet 12, design slope = -0.110%. (Photos).

CEG conducted pipe ovality measurement installed 54-IN profile wall HDPE pipe using tape measured vertical and horizontal axis Sta. 766+80 before backfill ; vertical 54-0/0", horizontal 54-0/0" before backfill. CEG also measured ovality in 54-IN pipe after backfill on 04-02-25;

Sta. 790+50 after backfill ; vertical 54-1/4", horizontal 53-5/8" after backfill  
Sta. 790+80 after backfill ; vertical 53-7/8", horizontal 54-0/0" after backfill  
Sta. 790+95 after backfill ; vertical 53-7/8", horizontal 54-0/0" after backfill  
Sta. 791+80 after backfill ; vertical 53-5/8", horizontal 54-1/4" after backfill  
Sta. 792+40 after backfill ; vertical 53-5/8", horizontal 54-1/8" after backfill  
Sta. 792+00 after backfill ; vertical 53-5/8", horizontal 54-1/8" after backfill

Reference specification 02300 and 15068 for ovality criteria; 1% of pipe diameter = 1/2", ovality measurement taken 04-02-25 and 04-03-25 within allowable deflection limits, before and after backfill (Photos).

Contractor continued placement and densification of initial pipe zone backfill 54-IN ID profile wall HDPE pipe approx Sta. 814+00. Observed placement of purple tracer wire directly over the crown of installed pipe. Tracer wire product per approved Submittal 03 and spec 02300. Provisions made for tracer wire turnout to marking post in accordance with Dwg Dtl 1/D1 and 4/D2. Pipe zone material; 3/4"-0 aggregate processed on site from excavation spoils per approved Submittal 25. Pipe zone material placed in approx 1 ft lifts and machine manipulated into intimate contact with the pipe in the pipe haunch zone. Compaction provided with excavator mounted sheeps foot roller. (Photos).

Contractor has initiated installation HAS turnouts MCPH2 Seg2 pipe, irrigation service assembly isolation butterfly valves, and irrigation service assemblies per Drawing details 3/D1, 5/D1, and 7/D1. HAS fittings materials and installation procedures conforming with specification 15068 and approved submittal 16.1 - Krah HDPE Pipe Rev.2. Flow meters per approved Submittal 05, gate valves per approved Submittal 04, air release valves per approved Submittal 07, air chucks per approved Submittal 12, small diameter solid wall HDPE pipe and fittings + backing rings + gaskets + flange bolting hardware per approved Submittals 09 + 10 + 11 and 17.1.

On-site discussions with field foreman, site superintendent Tanner;

- 1) Install MCPH2 Seg pipe with 24" width btwn pipe and trench sidewall to afford specified densification of pipe zone backfill material.
- 2) Remove trench ravel oversize from the pipe zone before placement pipe zone material.
- 3) Provide QC measure of pipe slope in the installed condition, 4-ft smart level measure at flow line, directly mark pipe with measured slope.
- 4) Keep pipe clean, remove dirt, rock, tape, and debris.

**Action Items / Items for Further Discussion:**

- 1) Selective demo, protect-in-place weir boxes to remain, maintain access at vehicular bridge removed, salvage items where noted on Dwgs.
- 2) Type B Trench backfill density testing results private access way and public roadway crossings MCPH2 Seg2 pipeline.

PHOTOGRAPHS:



AID MCPH2 Seg2 - Sta. 718+00 Intake Structure, wall cure, plug & patch tie holes + form and bar for pipe collar 04-01-25



AID MCPH2 Seg2 - Sta. 718+00 Intake Structure, walls, plug and patch tie holes 04-01-25



AID MCPH2 Seg2 - Sta. 718+00 Intake Structure, walls, tie hole expansion plugs 04-01-25



AID MCPH2 Seg2 - Sta. 718+00 Intake Structure, Simpson AT-3G hybrid acrylic anchoring adhesive 04-01-25



AID MCPH2 Seg2 - Sta. 718+00 Intake Structure, Simpson AT-3G hybrid acrylic anchoring adhesive, exp 07-29-25, Lot #340 04-01-25



AID MCPH2 Seg2 - Sta. 718+00 Intake Structure, pipe collar adhesive dowel layout + drilled holes 04-01-25



AID MCPH2 Seg2 - Sta. 718+00 Intake Structure, pipe collar adhesive dowel drilled holes 5-inches depth 04-01-25



AID MCPH2 Seg2 - Sta. 718+00 Intake Structure, pipe collar adhesive dowel drilled holes, compressed air cleaning 04-01-25



AID MCPH2 Seg2 - Sta. 718+00 Intake Structure, pipe collar adhesive dowel drilled holes, bottle brush cleaning 04-01-25



AID MCPH2 Seg2 - Sta. 718+00 Intake Structure, pipe collar, application of Simpson AT-3G hybrid acrylic anchoring adhesive 04-01-25



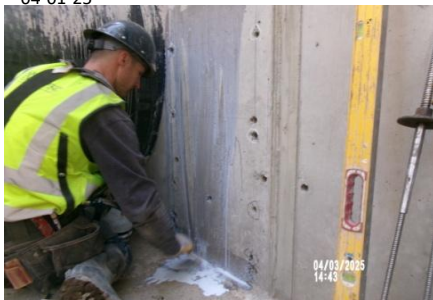
AID MCPH2 Seg2 - Sta. 718+00 Intake Structure, pipe collar, #4 dowels set in anchoring adhesive (2) 04-01-25



AID MCPH2 Seg2 - Sta. 718+00 Intake Structure, pipe collar, #4 dowels set in anchoring adhesive (1) 04-01-25



AID MCPH2 Seg2 - Sta. 718+00 Intake Structure, wall collar, approved bonding agent 04-01-25



AID MCPH2 Seg2 - Sta. 718+00 Intake Structure, pipe collar, application of approved bonding agent 04-01-25

PHOTOGRAPHS:



AID MCPH2 - Sta 763+75 54-IN ID profile wall  
HDPE pipe trench excavation 03-25-25



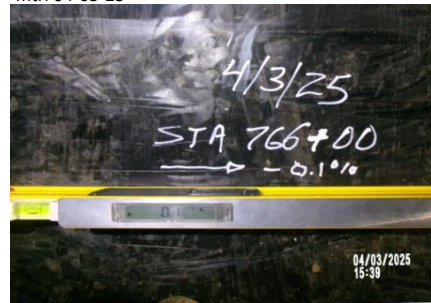
AID MCPH2 - Sta 764+50 54-IN ID profile wall  
HDPE pipe, placement and grading of pipe bedding  
mtrl 04-03-25



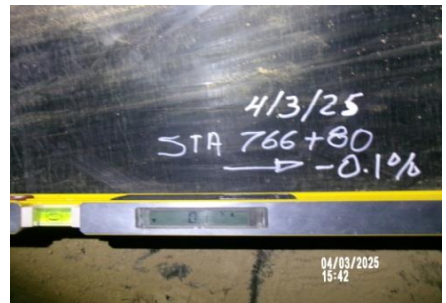
AID MCPH2 - Sta 765+50 54-IN ID profile wall  
HDPE pipe install and field joint fusion 04-03-25



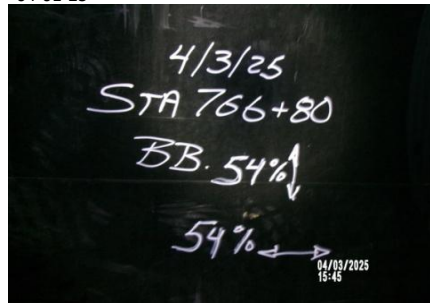
AID MCPH2 - Sta 767+25 54-IN ID profile wall  
HDPE pipe field joint #289 air pressure test PASS  
04-01-25



AID MCPH2 - Sta 766+80 54-IN ID profile wall  
HDPE pipe QA ovality measure before backfill 04-03-25



AID MCPH2 - Sta 766+80 54-IN ID profile wall  
HDPE pipe QA pipe slope measurement -0.1%  
slope 04-03-25



AID MCPH2 - Sta 766+80 54-IN ID profile wall  
HDPE pipe QA ovality measure before backfill 04-03-25



AID MCPH2 - Sta 814+00 54-IN ID profile wall  
HDPE pipe, initial backfill densification (1) 04-03-25



AID MCPH2 - Sta 814+00 54-IN ID profile wall  
HDPE pipe, initial backfill densification (2) 04-03-25



AID MCPH2 - Sta 789+75 54-IN ID profile wall  
HDPE pipe, rock slough removed from pipe zone  
prior to placement pipe zone mtrl (1) 04-02-25



AID MCPH2 - Sta 789+75 54-IN ID profile wall  
HDPE pipe, rock slough removed from pipe zone  
prior to placement pipe zone mtrl (2) 04-02-25



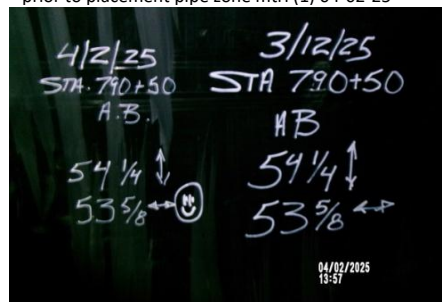
AID MCPH2 - Sta 788+75 54-IN ID profile wall  
HDPE pipe, rock slough removed from pipe zone  
prior to placement pipe zone mtrl (1) 04-02-25



AID MCPH2 - Sta 788+75 54-IN ID profile wall  
HDPE pipe, rock slough removed from pipe zone  
prior to placement pipe zone mtrl (2) 04-02-25



AID MCPH2 - Sta 791+50 54-IN ID profile wall  
HDPE pipe, 0.75-IN - 0 Aggregate Type A trench  
backfill in pipe zone 04-02-25

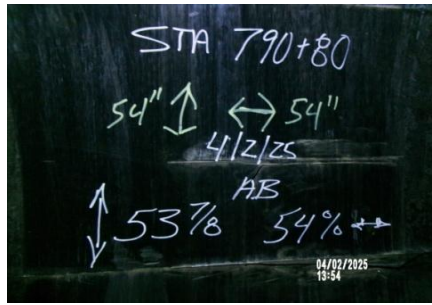


AID MCPH2 - Sta 790+50 54-IN ID profile wall  
HDPE pipe QA ovality measure after backfill 04-02-25

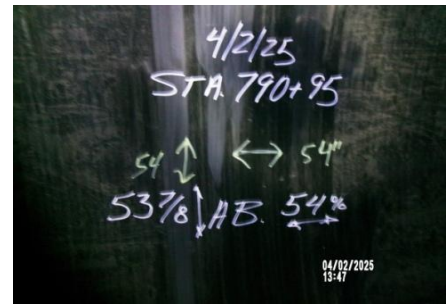
PHOTOGRAPHS:



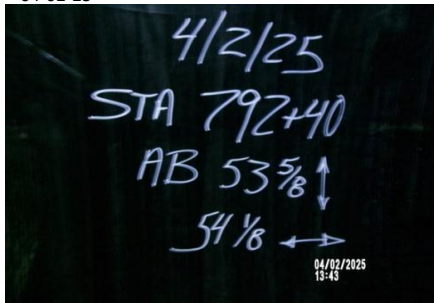
AID MCPH2 - Sta 790+85 54-IN ID profile wall  
HDPE pipe QA ovality measurements after backfill  
04-02-25



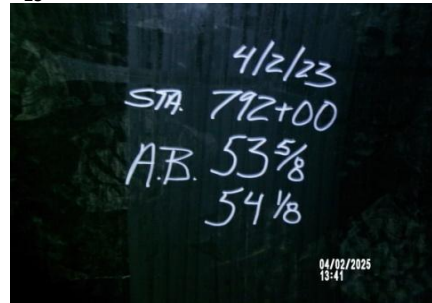
AID MCPH2 - Sta 790+80 54-IN ID profile wall  
HDPE pipe QA ovality measure after backfill 04-02-  
25



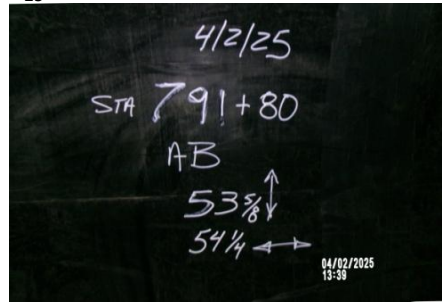
AID MCPH2 - Sta 790+95 54-IN ID profile wall  
HDPE pipe QA ovality measure after backfill 04-02-  
25



AID MCPH2 - Sta 792+40 54-IN ID profile wall  
HDPE pipe QA ovality measure after backfill 04-02-  
25



AID MCPH2 - Sta 792+00 54-IN ID profile wall  
HDPE pipe QA ovality measure after backfill 04-02-  
25



AID MCPH2 - Sta 791+80 54-IN ID profile wall  
HDPE pipe QA ovality measure after backfill 04-02-  
25



AID MCPH2 - Butt fusion welding 4-In irrigation  
turnout assembly pipe and fittings 04-03-25



AID MCPH2 - Preassembled 4-In irrigation turnout  
assembly pipe + fittings + flow meter + ARV 04-03-  
25



AID MCPH2 - Preassembled 4-In irrigation turnout  
assembly flow meter + Air Chuck + ARV 04-03-25